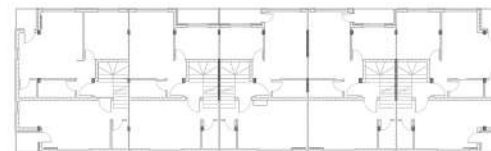
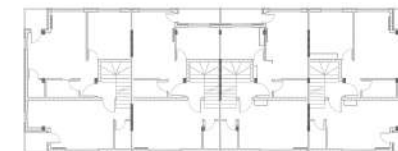


LAMELA 3 SPRAT 1 STAN 1		
br.	prostorija	p(m ²)
1	Hodnik	3.60
2	Kupatilo	3.40
3	Dnevna, kuhinja i trp.	15.17
4	Spavaća soba	7.85
5	Terasa	3.08
Stan 1 - Neto		33.10

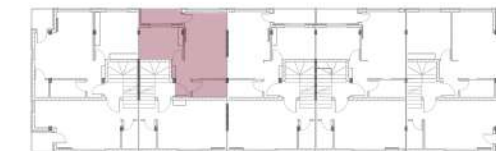
LAMELA 1



LAMELA 2



LAMELA 3



UKUPNA NETO POVRŠINA

33.10m²